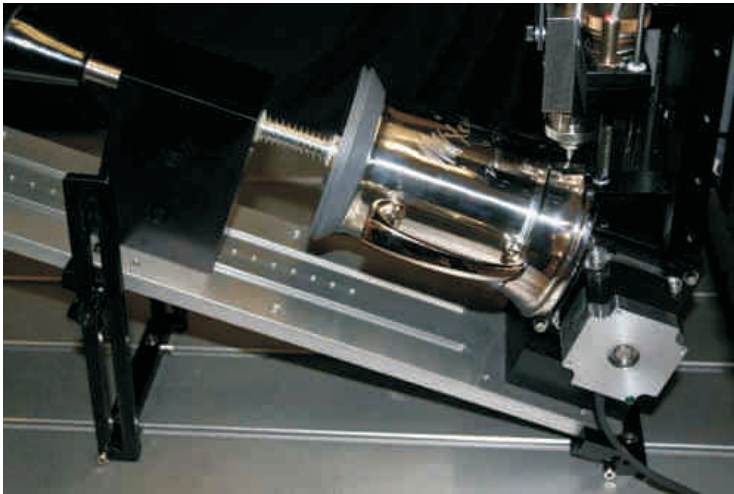
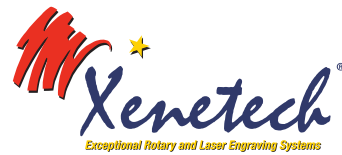


-Cylindrical Tilt Option-

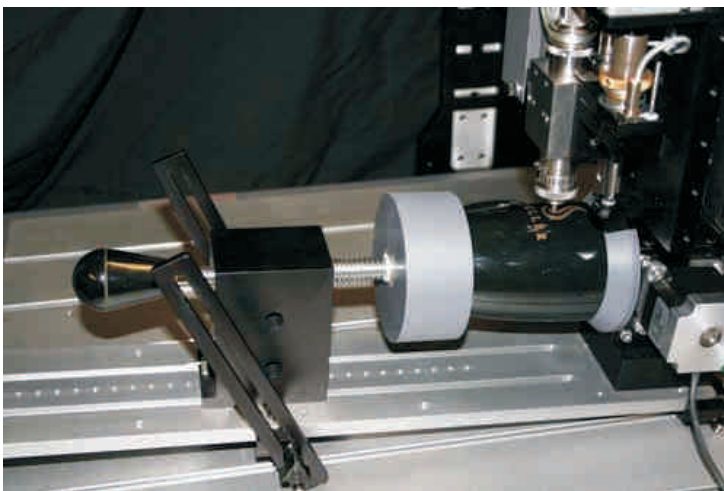
Xenetech Global, Inc., a leading manufacturer of laser and mechanical engraving and cutting systems, has developed a tilt option for its rotary and laser cylindrical engraving attachments. With this option, the cylindrical attachment can achieve a tilt of 0 to 21 degrees, allowing the rotary or laser system to engrave conical, pyramid, tapered, and other odd shaped pieces. Combine this tilt capability with Xenetech's 360 degree cylindrical, indexing, or fixed position engraving control and users can engrave a wide variety of items including: odd shaped gifts, martini sloped glasses, trophy and award components, multi-sided boxes, and hard to engrave industrial parts.



Engraving Metal Mug Base with Xenetech's Cylindrical Tilt Option

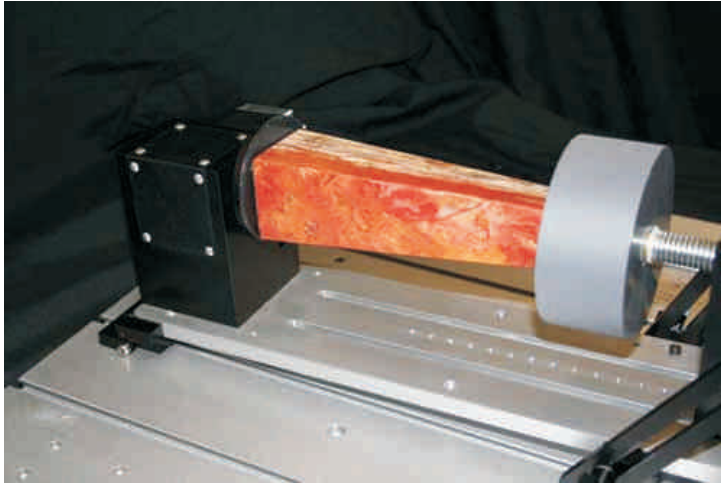


The tilt option is easily field retrofitable to existing Xenetech cylindrical attachments. Users can install and prepare the tilt option for engraving in just a few minutes. It is available for use with all lasers, and the 1313, 1625, 2525, 2550 rotary systems. Rotary engraving system users are limited to a standard clearance of 7.188" for the 1313 and 1625 and 7.438" for the 2525 and 2550; however, taller table uprights are available to increase clearance another 7". XL laser users will need a 4" focal length lens to utilize the tilt option.



Ceramic Mug Engraved with Xenetech's Cylindrical Tilt Option





Engrave Conical, Pyramid, Tapered and Other Odd Shaped Pieces, Using the Tilt Option

“This tilt option instantly increases the quality of engraving and variety of items the system can engrave. With this tilt option, a perpendicular angle is achieved relative to the engraving surface,” stated Jimmy DuBose, Xenetech’s Sales Manager. “This ensures high quality engraving in difficult to reach places. If your customer wants engraving in the curved lip of a cup, the tilt option makes this and many other places possible. We developed this option at the request of a customer, but it can help thousands of our customers easily expand their engraving capability at a relatively low cost.”

Xenetech develops and manufactures a full line of computerized rotary engraving systems, laser engraving systems, and professional engraving software for the recognition, sign, rubber stamp, jewelry, gift, and industrial marking industries. Established in 1986, the company is based in Baton Rouge, Louisiana and maintains a global distribution network. For more information about the new tilt option or Xenetech’s family of engraving products, browse their website at www.xenetech.com or call AES Group (Aust) Pty Ltd on: 1300 667761